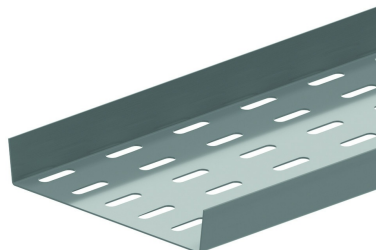


BP Plaque de fond



| Référence | Finition | ↕ mm | ↔ mm | → ← mm | ↔ mm | kg/m | 📦 | Unité |
|----------------|----------|---------|---------|------------|---------|-------|---|-------|
| BP200 | SZ | 25 | 141 | | 3000 | 1,560 | 3 | M |
| BP300 | SZ | 25 | 241 | | 3000 | 2,400 | 3 | M |
| BP400 | SZ | 25 | 341 | | 3000 | 3,230 | 3 | M |
| BP500 | SZ | 25 | 441 | | 3000 | 4,030 | 3 | M |
| BP600 | SZ | 25 | 541 | | 3000 | 4,860 | 3 | M |
| ZMBP200 | DF | 25 | 141 | | 3000 | 1,366 | 3 | M |
| ZMBP300 | DF | 25 | 241 | | 3000 | 2,048 | 3 | M |
| ZMBP400 | DF | 25 | 341 | | 3000 | 2,730 | 3 | M |
| ZMBP500 | DF | 25 | 441 | | 3000 | 3,411 | 3 | M |
| ZMBP600 | DF | 25 | 451 | | 3000 | 4,093 | 3 | M |

A fixer avec:



Boulon à tête
ronde
autobloquant
RB



Ecrou coulissant
pour profil
support
PNS

Légende de la finition

- SZ = Sendzimir
- DF = Defender