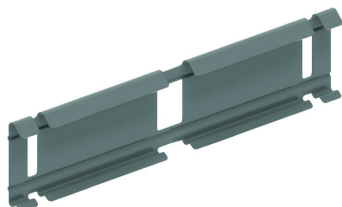

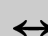
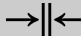
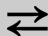



KPVF

Eclisse rapide pour VFU(L)

Montage rapide sans vis et écrous. Uniquement pour VFU(L)60, VFU85, VFU110.



Référence	Finition	 mm	 mm	 mm	 mm	kg/stk		Unité
KPVF	SZ	51	248			0,100	30	STK
ZMKPVF	DF	51	248			0,100	30	STK

Légende de la finition

- SZ = Sendzimir
- DF = Defender