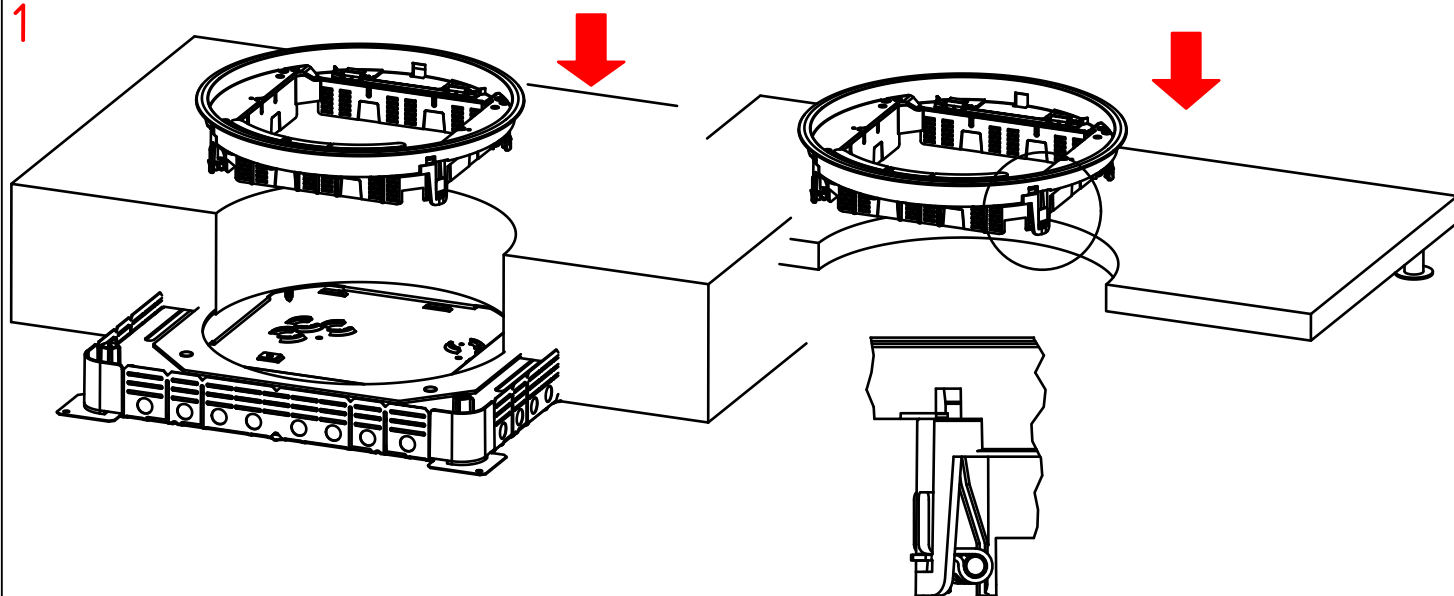
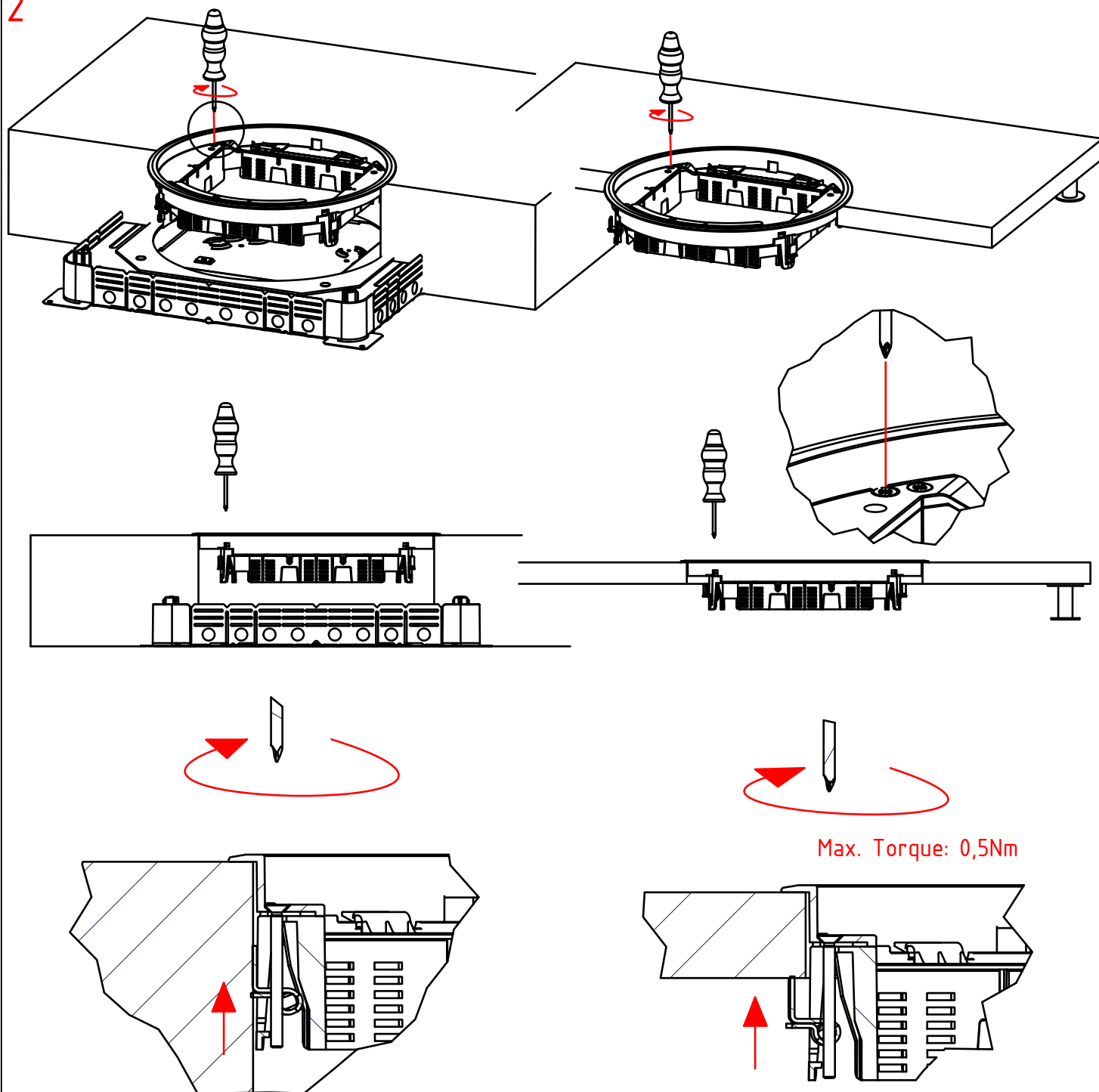


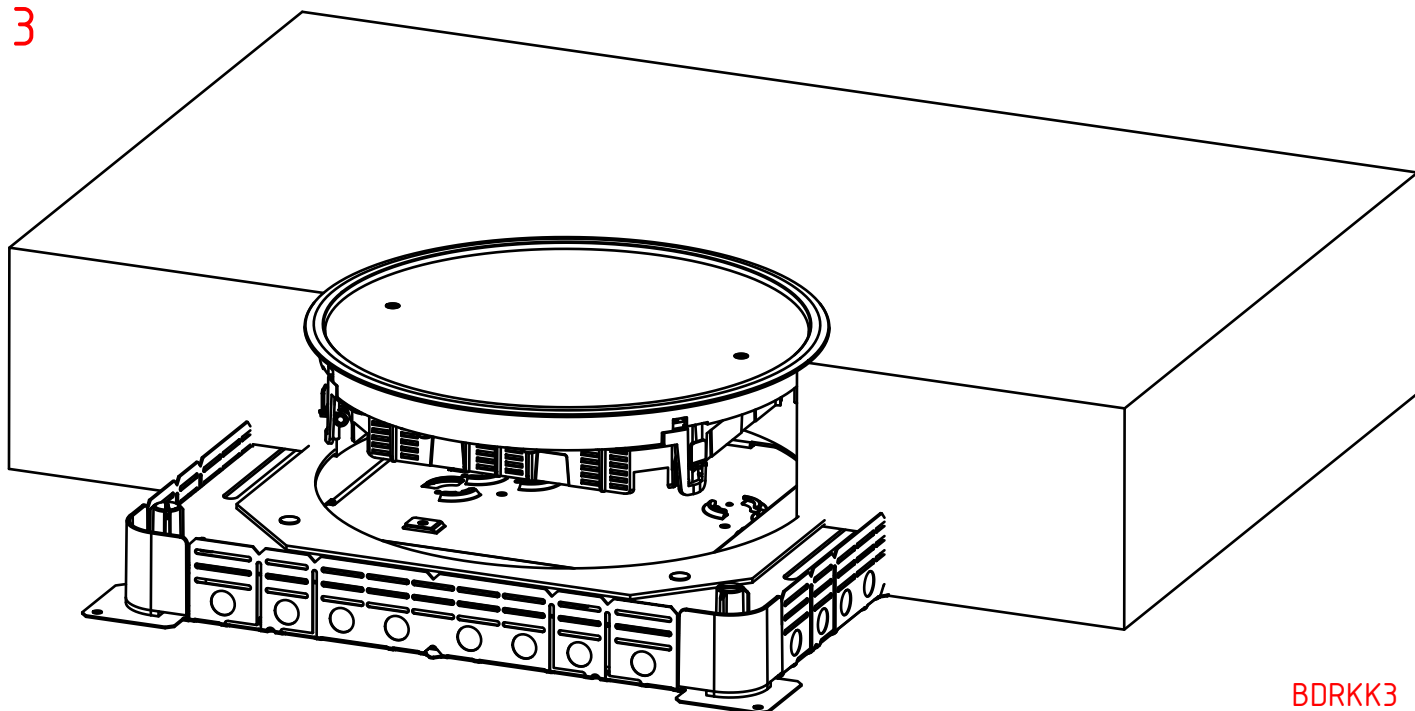
1



2



3



BDRKK3

1: Installation of the frame.

★ Make sure that the clamps are at there lowest position.

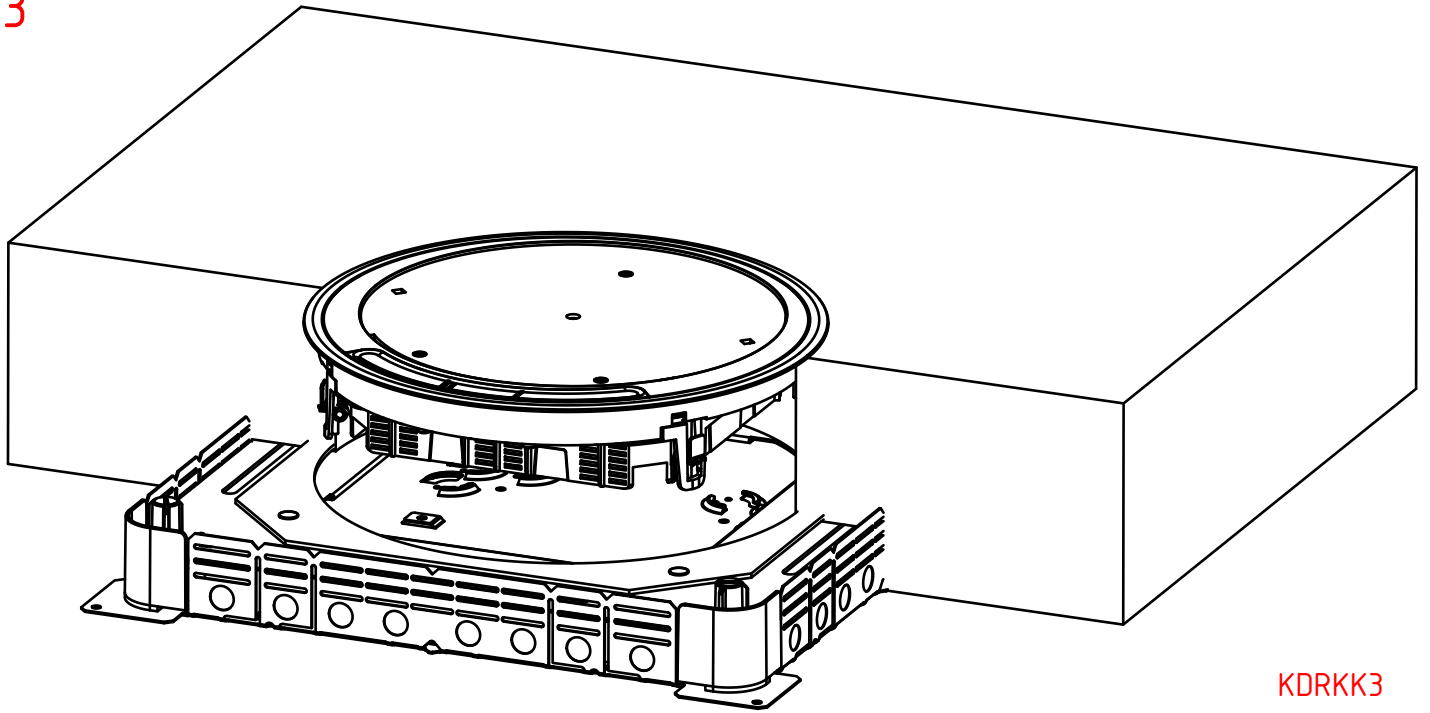
★ Insert the frame into the floor.

2: Fixing the frame in the floor.

★ Turn the bolt on each corner of the frame to tighten the clamps onto the floor.

3: Reinstallation of the cover

3



KDRKK3

1: Installation of the frame.

* Make sure that the clamps are at there lowest position.

* Insert the frame into the floor.

2: Fixing the frame in the floor.

* Turn the bolt on each corner of the frame to tighten the clamps onto the floor.

3: Reinstallation of the cover