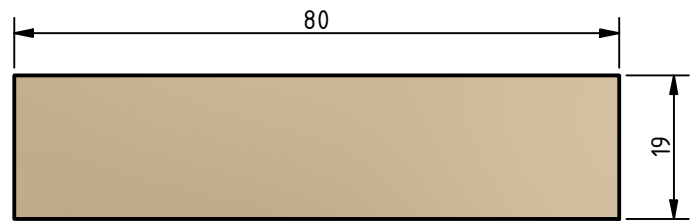


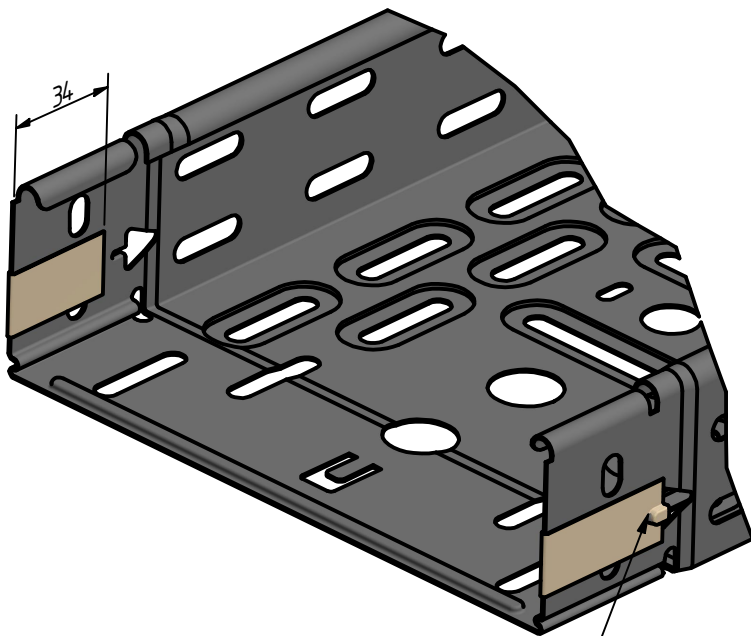
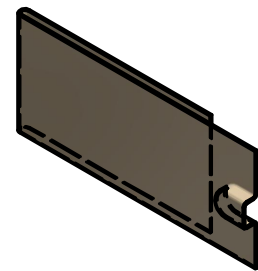
How to avoid damage to coated KBSCL cable trays

3M Polyethylene tape 5423,
or similar low coefficient friction tape
for a "slip plane" effect on both surfaces.

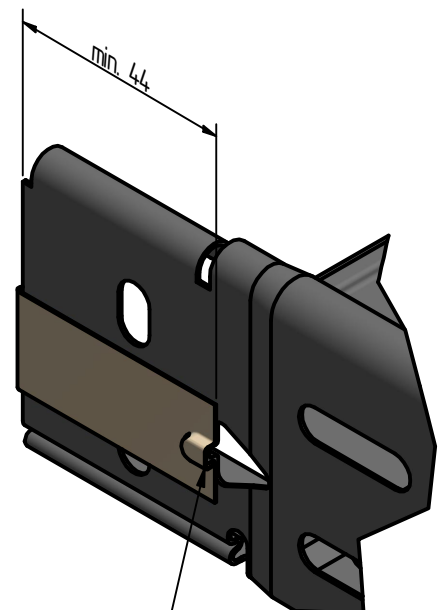
Tape not supplied by Vergokan.



Remove backing tape and press down firmly onto the cable tray.
Make sure to cover the locking bump in the tray side wall,
preventing damage to the coating when inserting next cable tray



Press down firmly



Make sure to cover the
entire locking bump