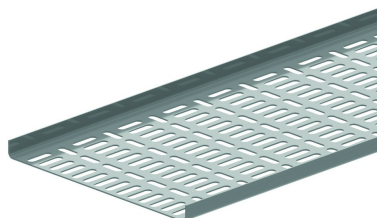


NATO15

Scheepskabelbaan

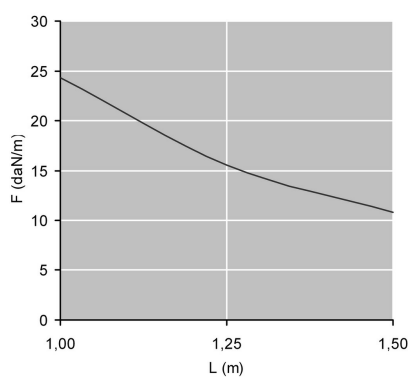


Langs- en dwarsperforaties
Rechte boord

| Artikel | ↕ mm | ↔ mm | → ← mm | ↔ mm | kg/m | 📦 | Eenh. |
|-----------------------|---------|---------|------------|---------|-------|----|-------|
| NATO15.050.125 | 15 | 50 | 1,25 | 2000 | 0,730 | 40 | M |
| NATO15.100.125 | 15 | 100 | 1,25 | 2000 | 1,050 | 20 | M |
| NATO15.150.125 | 15 | 150 | 1,25 | 2000 | 1,350 | 20 | M |
| NATO15.200.125 | 15 | 200 | 1,25 | 2000 | 1,700 | 20 | M |
| NATO15.300.125 | 15 | 300 | 1,25 | 2000 | 2,400 | 20 | M |

BELASTINGSDIAGRAM

Doorlopend gemonteerd met koppelingen 1/5 van de ondersteuningspunten. Gelijkmatic verdeebe belasting. Veiligheidscoëfficiënt = 2.

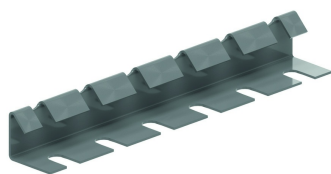


F = max. toelaatbare belasting (daN/m)

L = steunafstand (m)

L/200 = doorbuiging (m)

Te bevestigen met:



Knijpkoppelplaat
V15.200